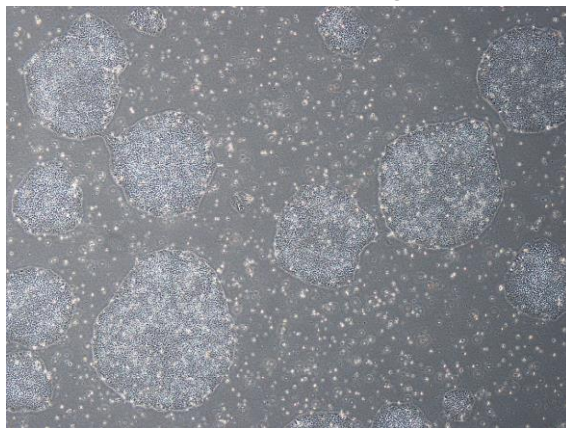


【 CiRA-j-1065 】 Morphology of iPSC colonies

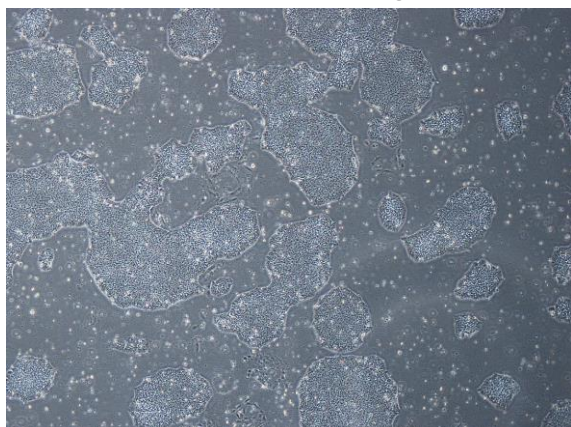
CiRA-j-1065-A: passage-2



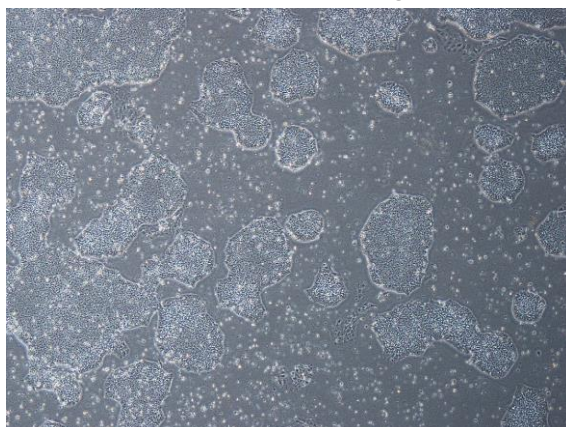
CiRA-j-1065-B: passage-2



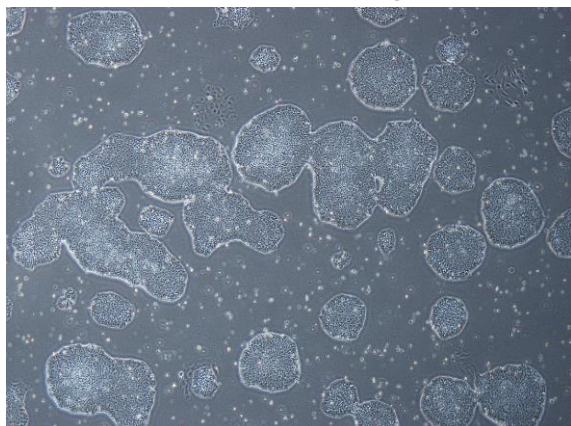
CiRA-j-1065-C: passage-2



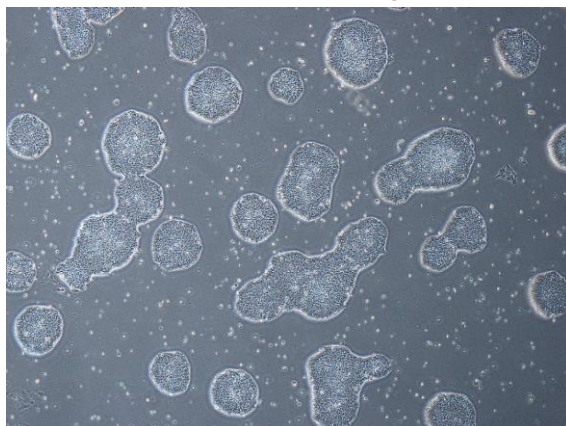
CiRA-j-1065-D: passage-2



CiRA-j-1065-E: passage-2



CiRA-j-1065-F: passage-2



(All images were captured at 4x magnification)